

# Loadcells



# H8C Shear beam loadcell

## Features

- **Alloy steel construction makes it corrosion resistant**
- **Capacities from 500kg to 5 tonne**
- **Suitable for:**
  - **heavy duty industrial floor platforms**
  - **Hopper scales**
  - **Mechanical updates**
- **OIML type approved for trade use**



# L6G Single point loadcell

## Features

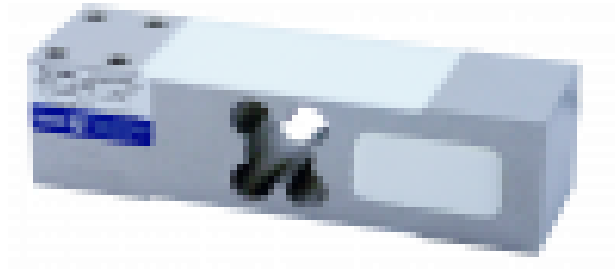
- **Aluminium construction**
- **Capacities from 50kg to 750kg**
- **Suitable for single load cell platforms up to 600mm x 600mm**
- **Suitable for overhead rail scales & carcass weighers**
- **OIML type approval for trade use**



# L6E3 Single point loadcell

## Features

- **Aluminium construction**
- **Capacities from 50kg to 300kg**
- **Suitable for small single load cell platforms up to 450mm x 450mm**
- **Suitable for overhead rail scales & carcass weighers**
- **OIML type approval for trade use**



# L6F Single point loadcell

## Features

- **Aluminium construction**
- **Capacities from 500kg to 2000kg**
- **Suitable for big single load cell platforms up to 1200mm x 1200mm**
- **Suitable for overhead rail scales & carcass weighers**
- **OIML type approval for trade use**



# BM11 Bending beam loadcell

## Features

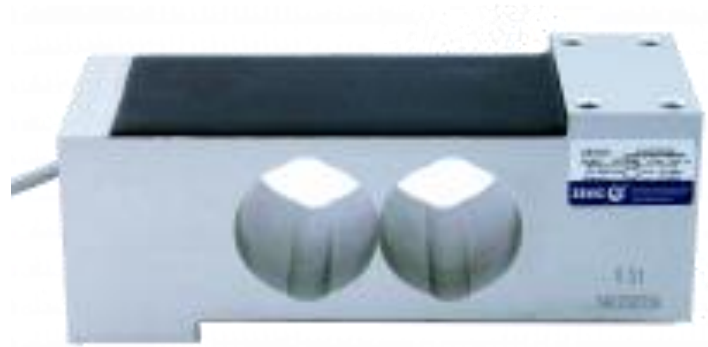
- **Stainless steel construction makes it highly corrosion resistant**
- **Hi precision weight sensor**
- **Suitable for batching hoppers, mechanical updates/ conversions**
- **Stainless steel construction**
- **Wet area applications especially in food processing and chemical industries**
- **IP68 rating**
- **OIML approved for trade use**



## L6T single point loadcell

### Features

- **Aluminium construction**
- **Capacities from 50kg to 1000kg**
- **Suitable for single load cell platforms up to 800mm x 600mm**
- **Suitable for overhead rail scales & carcass weighers**
- **OIML type approval for trade use**



# B8D Shear beam loadcell

## Features

- **Stainless steel construction makes highly corrosion resistant**
- **Hi precision weight sensor**
- **Suitable for platform scales, hoppers scales, mechanical updates/ conversions**
- **Stainless steel construction**
- **IP68 rating**
- **Wet area applications (food processing and chemical industries)**
- **OIML approved for trade use**





# HM9B Double ended shear beam

## Features

- **Alloy steel construction (nickel plated)**
- **Available in capacities from 10000kg to 50000kg**
- **Suitable for large platform scales, weighbridges, silos and large vessels / hoppers**
- **Ball and cup assembly makes highly resistant to side loading**
- **Four wire connection with cable length up to 20m for hire capacities**

